

The Magical World of AI and the Wise Owls



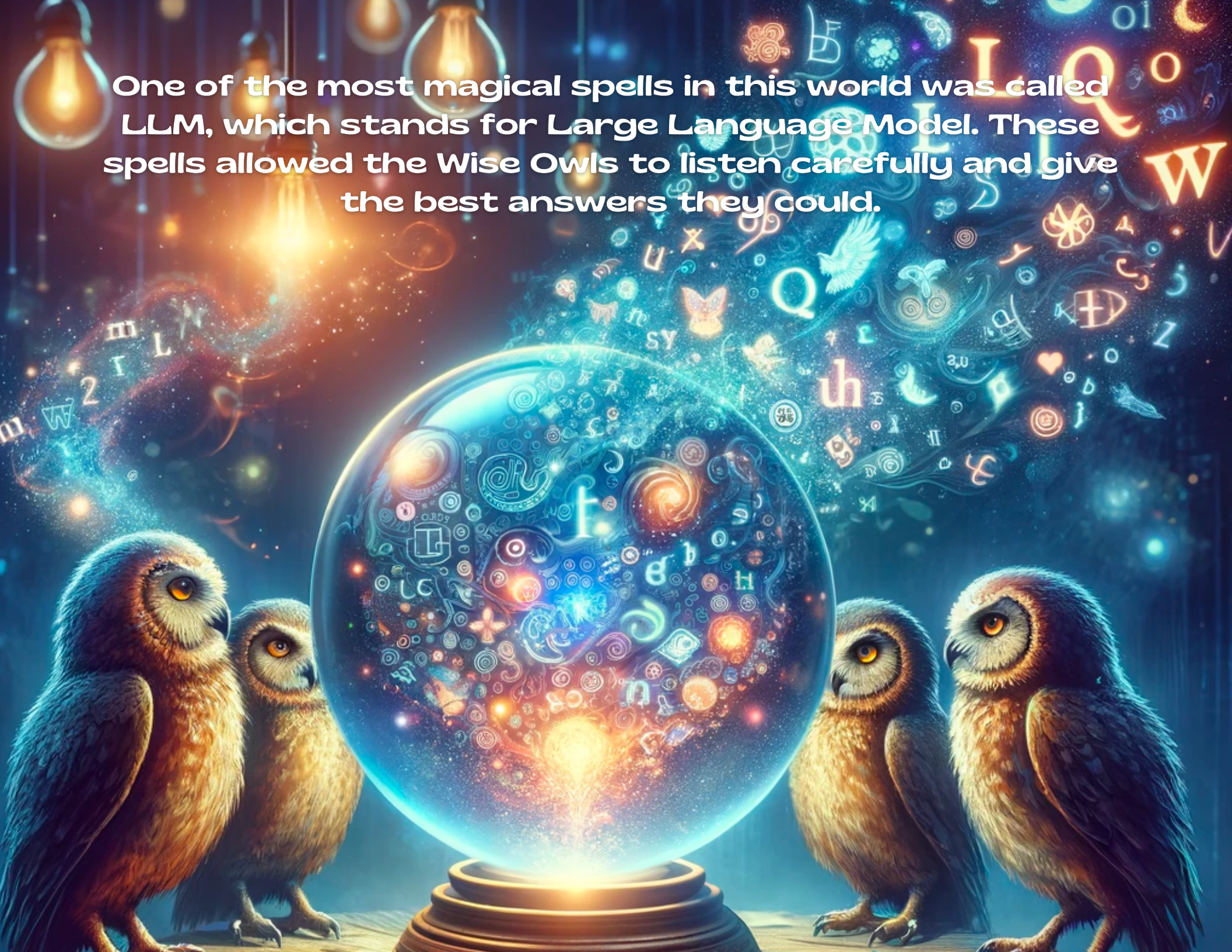


In a faraway land filled with wonder and magic, there lived smart creatures known as the Wise Owls. These owls were very special because they could understand and speak any language!



The Wise Owls were part of something much bigger, a magical world called Artificial Intelligence, or AI for short. AI is like a fairy tale come to life, where machines can learn and do things just like humans.

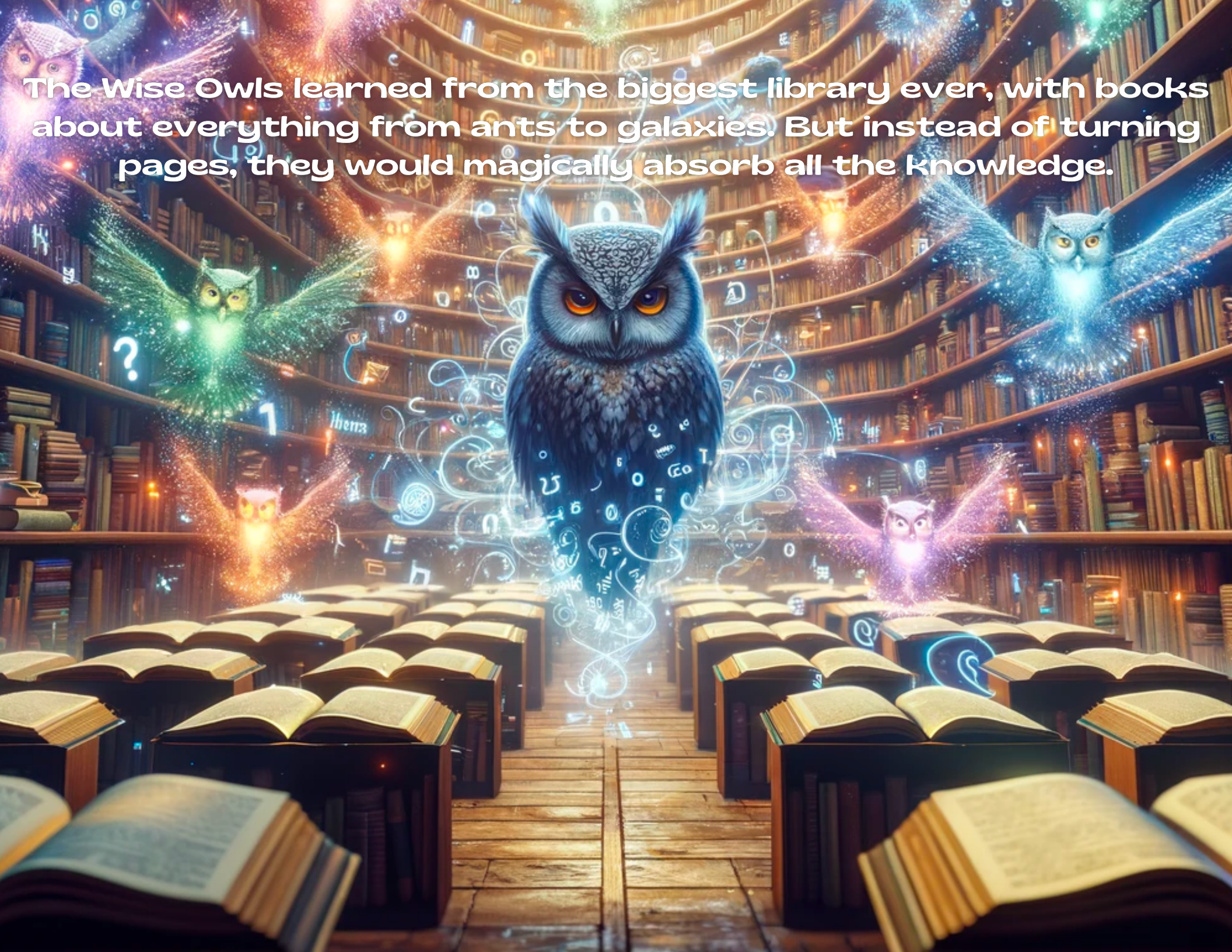
One of the most magical spells in this world was called LLM, which stands for Large Language Model. These spells allowed the Wise Owls to listen carefully and give the best answers they could.



Imagine you asked, "Why is the sky blue?" A Wise Owl would whisper to the wind, gather the words from their magical spell, and tell you a story about the sun and the earth that makes the sky look blue.



The Wise Owls learned from the biggest library ever, with books about everything from ants to galaxies. But instead of turning pages, they would magically absorb all the knowledge.





Sometimes, even Wise Owls need to learn more. If they don't know something, they say, "Let's discover it together!" because learning is an adventure that never ends



The Wise Owls always remind us that the magic of AI is very powerful. It can create wonderful things, solve tricky problems, and make the world a better place if used with kindness and care.



And so, in the magical world of AI and the Wise Owls, every day is a chance to learn something new, to help others, and to imagine the endless possibilities that tomorrow can bring.